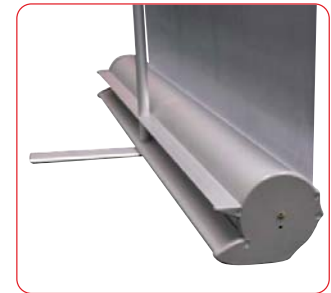
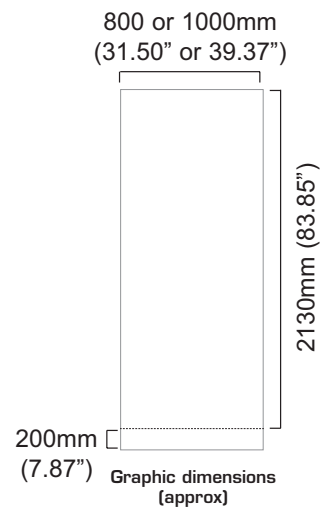




A lightweight economy roller banner with slim base and bungee pole making it very compact, complete with a twist out foot for extra stability.

features & benefits

- Lightweight components
- Reusable spring loaded rail clamp system for easy graphic application
- Slide on/off easy change graphic applicator
- Twist out stabilising foot for extra stability
- Available in anodised silver
- Choice of 800mm or 1000mm widths
- Includes quality carry bag



hardware specifications

Hardware Dimensions (mm):
2200 (h) x 825 (w) x 400 (d) approx.
86.61" (h) x 32.48" (w) x 15.75" approx.
(Depth dimension refers to twist out foot)

Weight:
4kg (8.8lbs) approx
(including carry bag)

graphic specifications

Visible Graphic Dimensions (mm):
2130 (h) x 800 or 1000 (w) approx
83.85" (h) x 31.50" or 39.37" (w) approx

Substrate:
Add 200mm (7.87") to base of graphic to allow for roller mechanism.
Recommended material thickness
225 - 300 Microns (8.86 - 11.81 Mils)

additional info

Included in kit:
Top rail, base, bungee pole set and carry bag

Availability:
Anodised silver

Assembly Instructions

Banner stand assembly



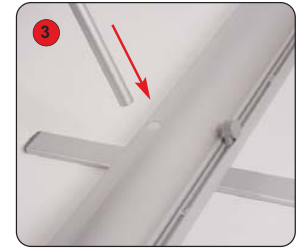
Kit includes: Top rail, base, bungee pole set and carry bag



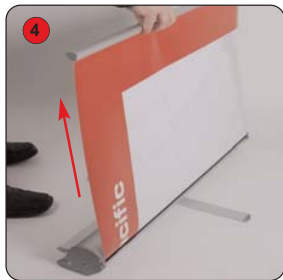
1 Assemble the bungee pole set.



2 Open out the stabilising foot.



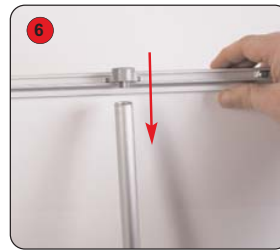
3 Fit the bungee pole into the banner stand base



4 Lift the top rail to raise the graphic from the base.



5 Lean the banner stand backwards and continue to extend the graphic.

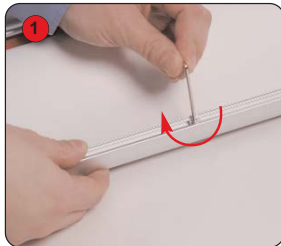


6 Secure the top rail cup onto the bungee pole.

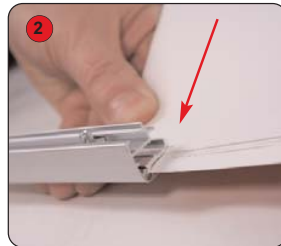
Hold the Top rail whilst lowering the banner, (do not drop) to prevent damage to the graphic.



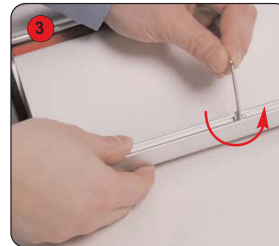
Graphic attachment instructions



1 Loosen the Top grip rail screws using a 2.5mm allen key.



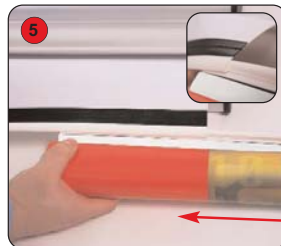
2 Squeeze open the Top grip rail and slide the graphic squarely into the rail.



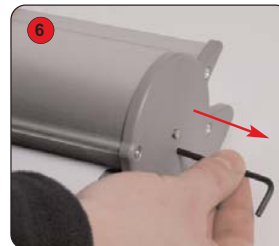
3 Tighten the Top grip rail screws.



4 Align and adhere the graphic squarely to the slider strip. (attach to front face of graphic)



5 Slide the graphic onto the leader strip.



6 Whilst holding the Top rail remove the locking pin from the base and gently allow the graphic to retract.

After fitting, the graphic should be left for 24 hours before use, to ensure the adhesive bonds sufficiently.

Note: Opening the banner stand base may invalidate the product warranty.